



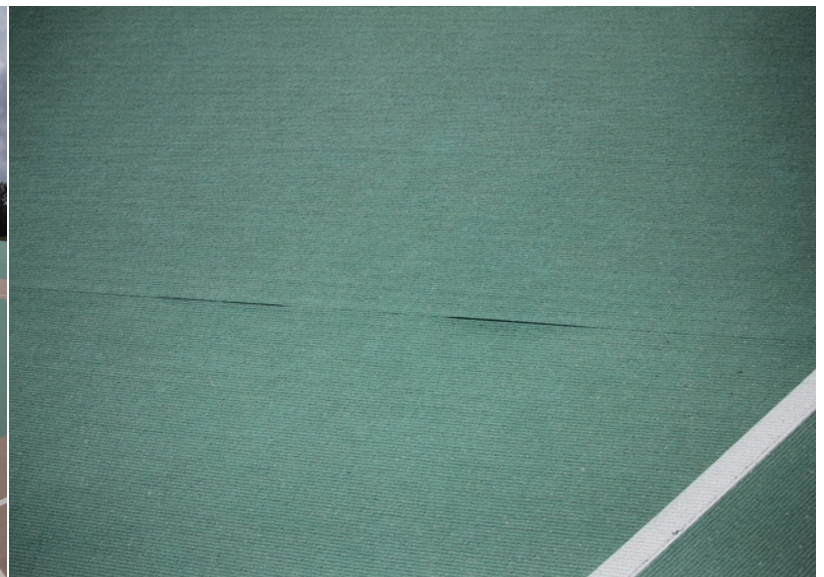
Join Us in Building a Brighter Future for Every Athlete

In May 2007, Engel Family Field, a Little Padres Park, in San Dieguito Park, opened its gates to a new era of inclusion, hosting the inaugural Opening Day for the Miracle League of San Diego (MLSD). For nearly two decades, this field has been more than just a place to play—it has been a sanctuary of joy, resilience, and community for children and adults with special needs.

However, time has taken its toll. The field's rubberized surface, built to provide a safe and accessible playing experience, is now showing significant wear and tear—posing a growing risk for our players. To ensure that every athlete continues to experience the magic of baseball safely, we must replace the surface with a new, high-quality material designed for durability and performance. In addition, the bleacher shade structure needs replacing and the electronic scoreboard needs updating.



Opening Day, March 2025



April 2025, showing seams fraying



Help Us Keep the Miracle Alive: Support Our Engel Family Field Improvement Project

For over 18 years, MLSD has provided children and adults with disabilities the opportunity to play baseball in an inclusive, supportive, and joyful environment. Each player is paired with a volunteer “buddy” who provides encouragement, guidance, and friendship on and off the field. Through our *Nurturing Philanthropic Souls®* initiative, we empower thousands of local youth volunteers to experience the joy of giving back, fostering empathy, and building lifelong connections with their players.

After nearly two decades of play, Engel Family Field has seen tremendous use and now requires resurfacing to continue serving our community safely. Spanning over 40,000 square feet with a 200-ft. fence line, this extensive area requires a significant investment to restore. The **County of San Diego Department of Parks and Recreation** and the **Padres Foundation** have each committed \$250,000 toward this \$900,000 project. However, to make this vision a reality, we need your support. The **Engel Family Field Capital Campaign 2025** aims to raise the remaining **\$400,000 by October 31, 2025**. This is our moment to step up, preserve this beloved space, and ensure that generations of athletes will continue to play, grow, and thrive.

Be a Champion – Leave Your Legacy

We invite you to be part of this historic effort through one of the following donor categories:

Donor Level	Contribution Amount	Recognition & Benefits
Naming Sponsor	\$250,000	Padres Foundation Commitment
Founders' Circle	\$100,000 - \$249,999	Permanent donor plaque recognition, website & campaign acknowledgment, large brick in the Circle of Champions
Leadership Circle	\$50,000 - \$99,999	Permanent donor plaque recognition, website & campaign acknowledgment, large brick in the Circle of Champions
Benefactors' Club	\$20,000 - \$49,999	Permanent donor plaque recognition, website & campaign acknowledgment, large brick in the Circle of Champions
Patrons' Circle	\$10,000 - \$19,999	Website & campaign acknowledgment, small brick in the Circle of Champions
Players' Club	\$5,000 - \$9,999	Website & campaign acknowledgment, small brick in the Circle of Champions
Coaches	\$1,000 - \$4,999	Website & campaign acknowledgment, small brick in the Circle of Champions
Buddies	Up to \$999	Website & campaign acknowledgment

Help Us Keep the Dream Alive

Your generosity will help us maintain a safe, inclusive space where every player—regardless of ability — can experience the thrill of the game. Join us in ensuring Engel Family Field remains a lasting legacy of accessibility, fun, and community.

Donate today and be part of something truly special.
Visit www.miracleleagueofsandiego.org to contribute.